

HZ10 组合开关

HZ10 Combination Switches

Combination Switch Series / 组合开关系列



HZ10-10



HZ10-25



HZ10-63、100



HZ10-100/E119

用途 Application

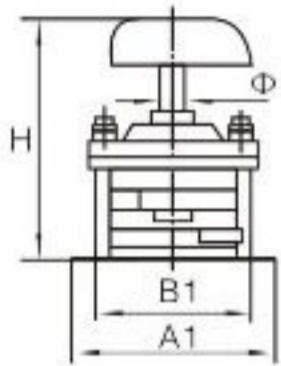
HZ10 combination switch is mainly used in the circuits of AC 50Hz, rated voltage 380V and below, DC voltage 220V and below, rated current up to 100A, to manually make, break and transfer circuit with inductive and resistance loads non-frequently, also it can directly control small capacity alternating motor.

HZ10-□/E119 switch is used in welding machine to adjust the current of less than 100A, AC 50Hz (or 60Hz), rated voltage 380V and below, and transfer between the main and spare appliances.

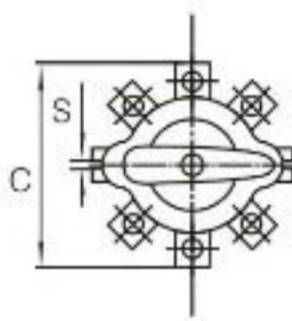
尺寸 Dimensions

单位 Unit: mm

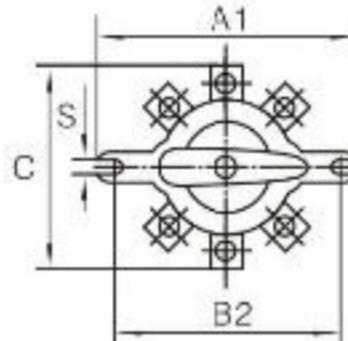
1、HZ10尺寸 Size of HZ10



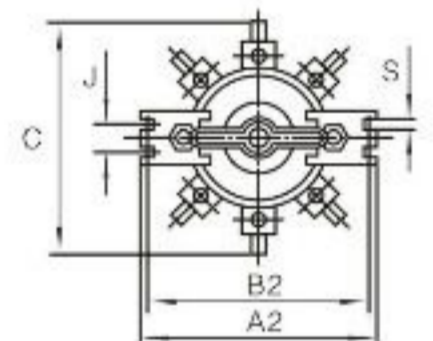
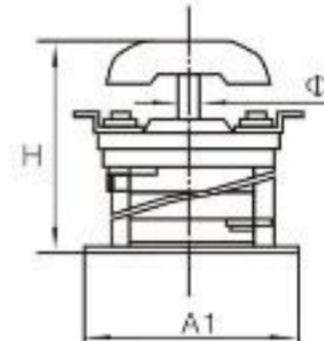
板前接线式尺寸
Size of front wiring



HZ10-10、25板后接线式尺寸
Size of rear wiring of HZ10-10, 25



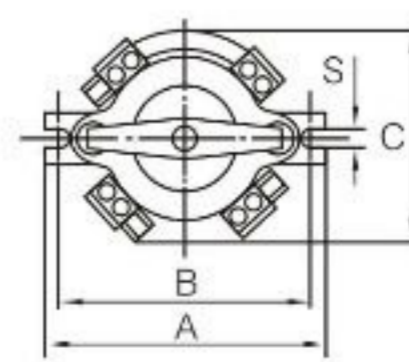
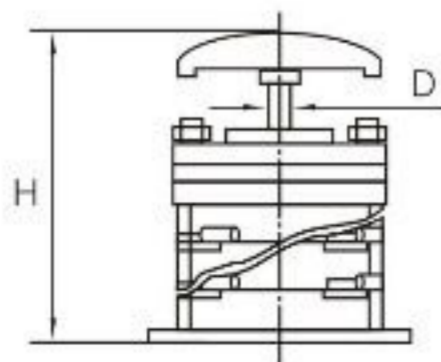
HZ10-63、100板后接线式尺寸
Size of rear wiring of HZ10-62, 100



产品型号 Type	外形尺寸 Outline size					安装尺寸 Mounting size			
	A1	A2	H	Φ	C	B1	B2	S	J
HZ10-10/1	65	86	62	6	~58	55	74	5	
HZ10-10/2			68						
HZ10-10/3			74						
HZ10-25/2	100	114	98	8	~92	90	100	6	
HZ10-25/3			108						
HZ10-63/2			129						
HZ10-63/3	142	153	144	9	~154	128	139	7	18
HZ10-100/3			152						

2、HZ10-□/E119尺寸

Size of HZ10-□/E119



型号规格 Type	A	B	C	D	H	S
HZ10-25/E119	100	90	90	8	140	6
HZ10-63/E119	142	128	110	9	165	7
HZ10-100/E119	142	128	128	9	210	7
HZ10-100/E119A	142	128	128	9	188	7