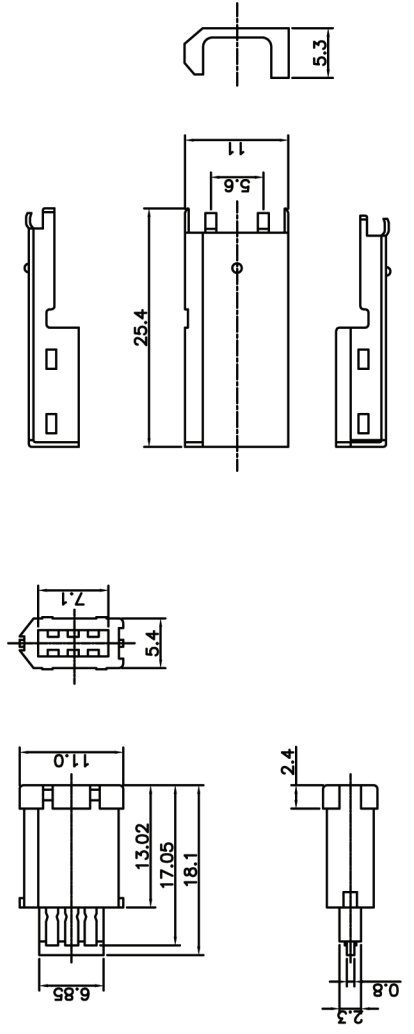


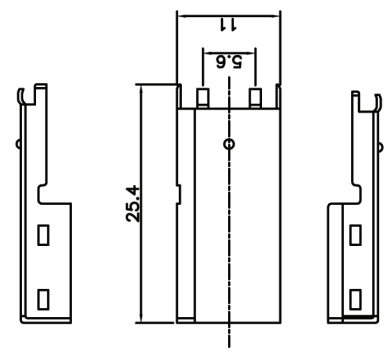
REV. A	DESCRIPTION NEW RELEASE	DRAWN HP 22/06/05	CHECKED	APPROVED

NOTES:

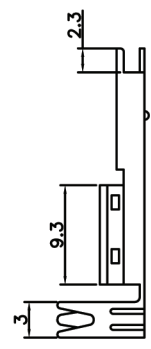
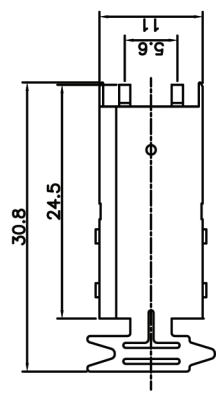
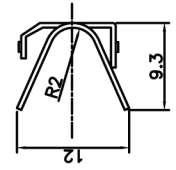
- SPECIFICATIONS
  - Contact Resistance: 50mΩ max
  - Insulator Resistance: 100MΩ min.
  - Current Rating: 1.5A per pin max.
  - Rated Voltage: 30V DC
  - Dielectric withstanding voltage: AC 100V For 1 minute
  - Contact: Copper Alloy
  - Housing: Thermoplastic(UL 94V-0)



Housing with contact



Upper shell



Down shell