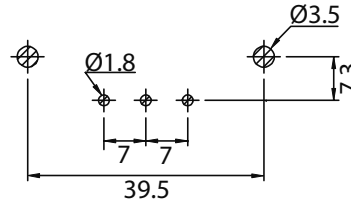
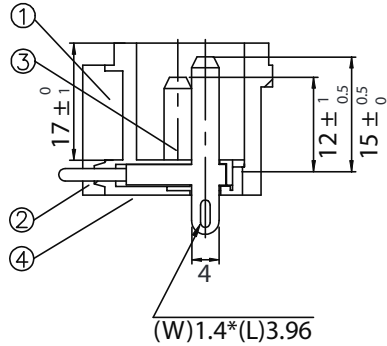
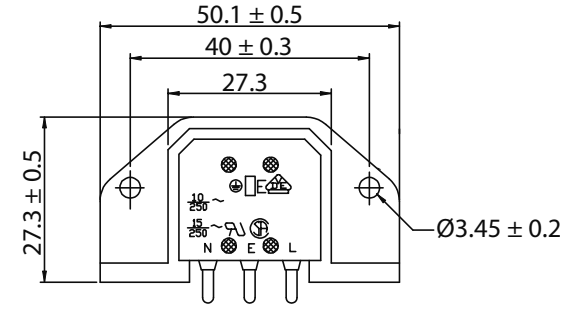
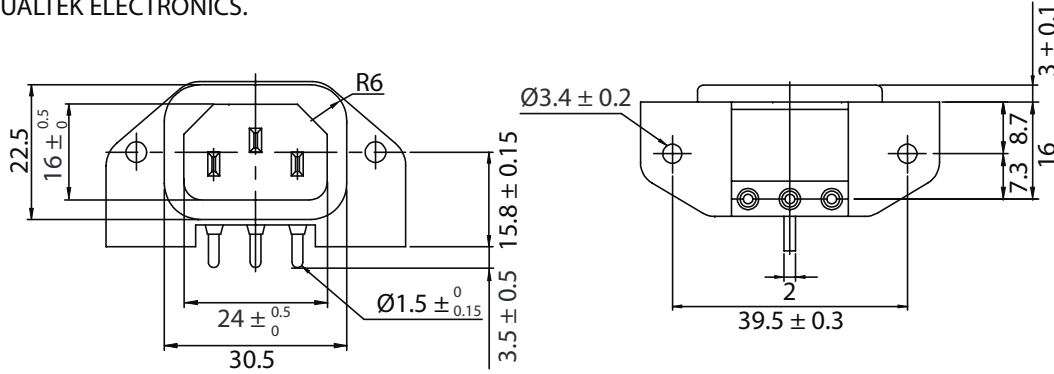
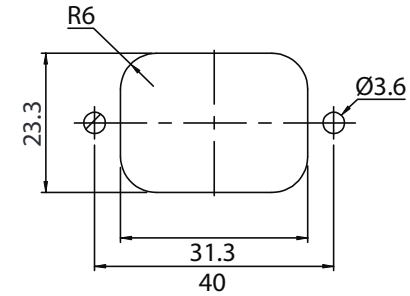


THESE DRAWINGS ARE THE PROPERTY OF QUALTEK ELECTRONICS AND NOT TO BE REPRODUCED FOR OR COMMUNICATED TO A THIRD PARTY WITHOUT THE EXPRESS WRITTEN PERMISSION OF AN OFFICER OF QUALTEK ELECTRONICS.

REVISION			
REV.	DESCRIPTION	DATE	APPROVED
B	RoHS Compliancy	06-01-06	DP



PCB LAYOUT



PANEL CUTOUT

NOTES:

RATING:

UL, CSA: 15A 250V AC

VDE: 10A 250V AC

APPROVALS: UL, CSA, VDE

RoHS COMPLIANT

4	Cover back of the Body	1
3	Contact PIN-B t=2mm Tin-Plated	2
2	Contact PIN-A t=2mm Tin-Plated	1
1	Body Insulator PBT Black Color	1

Dim range (mm)	Tolerance +/- (mm)	Part Number:	
		RoHS Compliant	
0-1	0.15	Description:	
1-6	0.20		
6-18	0.30	UNIT: mm	
18-50	0.50		
50-120	0.70		
120-250	0.90		
250-500	1.20		